

# Women for OSU

## 2017 Symposium Sponsorship Opportunities

---



2016 Women for OSU Symposium

### Women for Oklahoma State University

is a diverse group of visionary women who share a passion for inspiring leadership and financial support to Oklahoma State University.

Women for OSU envisions a culture of giving and service that acknowledges the significant impact women have at OSU and inspires others to positively shape the future of the university through philanthropy and engagement.

The Women for OSU annual spring Symposium is a unique opportunity to gather in Stillwater and gain valuable

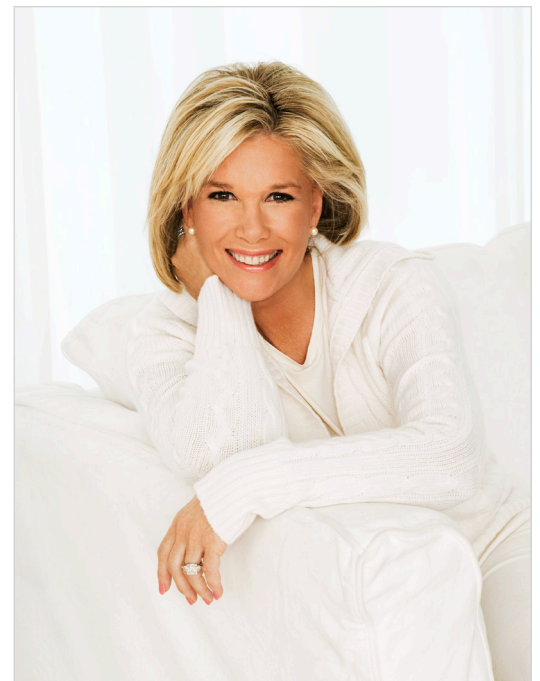
knowledge about philanthropic decision-making and leadership. Women for OSU celebrates members of the OSU family who display leadership in philanthropy by naming the Philanthropist of the Year and awarding scholarships to outstanding OSU students.

---

### Symposium Keynote Speaker: Joan Lunden

Thursday, April 27, 2017 | 9:30 a.m. | Gallagher-Iba Arena

For more than three decades, Joan Lunden has been a trusted voice in American homes. As the longest running host ever on early morning television, for nearly two decades Lunden greeted viewers each morning on *Good Morning America*. She reported from 26 countries, covered five presidents and five Olympics and kept Americans up to date on how to care for their homes, their families and themselves. An award-winning journalist, bestselling author, motivational speaker, philanthropist, women's health and wellness advocate, and mom of seven — she truly exemplifies today's modern working woman.



# Symposium Sponsorship Options

## Diamond Sponsor

\$15,000

### BENEFITS

- Recognized as underwriting sponsor for the 2017 Symposium breakfast reception and the opportunity to provide branded items
- Invitation to VIP reception
- Recognition in Women for OSU newsletter
- Mention in STATE magazine and other media ads
- Name on all promotional and program information
- 10 seats (full table) at Symposium and luncheon
- 4 VIP reserved parking permits
- Listing on Women for OSU website

*(Value of Benefits- \$480, \$14,520 is a tax-deductible gift)*

## Platinum Sponsor

\$10,000

### BENEFITS

- Invitation to VIP reception
- 10 seats (full table) at Symposium and luncheon
- 3 VIP reserved parking permits
- Listing on Women for OSU website

*(Value of Benefits- \$470, \$9,530 is a tax-deductible gift)*

### **CUSTOMIZABLE CORPORATE SPONSORSHIP OPPORTUNITIES ARE ALSO AVAILABLE.**

Please contact Mandy Heaps at the OSU Foundation for more information at [mheaps@OSUgiving.com](mailto:mheaps@OSUgiving.com) or 405.385.0721.

## Gold Sponsor

\$5,000

### BENEFITS

- Invitation to VIP reception
- 10 seats (full table) at Symposium and luncheon
- 2 parking permits
- Listing on Women for OSU website

*(Value of Benefits- \$460, \$4,540 is a tax-deductible gift)*

## Silver Sponsor

\$2,750

### BENEFITS

- Invitation to VIP reception
- 6 seats at Symposium and luncheon
- 1 parking permit
- Listing on Women for OSU website

*(Value of Benefits- \$274, \$2,476 is a tax-deductible gift)*

## Bronze Sponsor

\$1,750

### BENEFITS

- Invitation to VIP reception
- 4 seats at Symposium and luncheon
- Listing on Women for OSU website

*(Value of Benefits- \$176, \$1,574 is a tax-deductible gift)*

# Symposium Corporate Sponsorship

## Corporate Diamond Sponsor

\$25,000

### BENEFITS

- Recognized as presenting sponsor for the 2017 Women for OSU Symposium, featuring keynote speaker Joan Lunden
- Recognized as presenting sponsor of the VIP reception and the opportunity to provide a small, branded gift to guests; plus recognition with name and logo as the reception sponsor on a stand-up banner
- Pre-VIP reception with keynote speaker, OSU and OSU Foundation leadership
- Opportunity to offer a brief welcome message at the VIP reception
- Recognition at a spring Women for OSU regional event
- Prominent recognition in the Symposium printed program, slide during the Symposium and welcome/introduction of sponsor from the podium at the Symposium, along with other sponsors, as applicable
- A Women for OSU ad will run in the May 2017 issue of STATE magazine thanking Symposium sponsors; company will be recognized prominently with name and logo (*readership of approximately 90,000 per issue*)
- Recognition with name and logo in May/June 2017 Oklahoma newspaper ads to thank top Symposium sponsors and recognize the Philanthropist of the Year
- Recognition in Women for OSU newsletter in the May/June issue thanking Symposium sponsors and recapping the event with photos, etc. (*mailed to approximately 9,000 households*)
- Recognition with name and logo on the Women for OSU website, OSUgiving.com, from the effective date of gift through April 2018 (*site receives 342,000 page views annually*)
- Two tables of 10 seats each at the Symposium and luncheon
- 7 VIP reserved parking permits

*(Value of Benefits- \$950, \$24,050 is a tax-deductible gift)*

### QUESTIONS? PLEASE CONTACT:

**Mandy Heaps** | Women for OSU External Relations Team Representative & Director of Annual Giving Leadership Initiatives | OSU Foundation | [mheaps@OSUgiving.com](mailto:mheaps@OSUgiving.com) | 405.385.0721

**Customizable options for your corporate sponsorship are also available!**

# Women for OSU

I WOULD LIKE TO MAKE A DIFFERENCE AT OSU BY SPONSORING THE  
2017 WOMEN FOR OKLAHOMA STATE UNIVERSITY SYMPOSIUM!

## MY SPONSORSHIP LEVEL WILL BE:

- DIAMOND Sponsor** ..... **\$15,000** ..... (Value of Benefits- \$480, \$14,520 is a tax-deductible gift)
- PLATINUM Sponsor** ..... **\$10,000** ..... (Value of Benefits- \$470, \$9,530 is a tax-deductible gift)
- GOLD Sponsor** ..... **\$5,000** ..... (Value of Benefits- \$460, \$4,540 is a tax-deductible gift)
- SILVER Sponsor** ..... **\$2,750** ..... (Value of Benefits- \$274, \$2,476 is a tax-deductible gift)
- BRONZE Sponsor** ..... **\$1,750** ..... (Value of Benefits- \$176, \$1,574 is a tax-deductible gift)

## MY INFORMATION:

Name		Spouse Name	
Address		City	State Zip
Home phone	Cell phone	Email	
Employer		Title	
Spouse Phone		Spouse Email	

## MY PREFERRED PAYMENT METHOD:

- My check, payable to the **OSU Foundation**, is enclosed. Please note fund #20-64300 or WOSU Program Fund on your check.
- Please bill me
- Please charge my credit/debit card

Card Number \_\_\_\_\_ Exp. Date \_\_\_\_\_

Name on Card \_\_\_\_\_ CVC Code \_\_\_\_\_

Signature \_\_\_\_\_

- Have you included the OSU Foundation in your estate plan?
- Have you looked to see if your or your spouse's employer will match your contribution and double your impact? See a list of matching employers at [OSUgiving.com/matching](http://OSUgiving.com/matching)

### PLEASE SEND PAYMENT & COMPLETED FORM TO:

Oklahoma State University Foundation  
Attention: Women for OSU  
400 South Monroe | Stillwater, OK 74074

### QUESTIONS:

Contact Mandy Heaps at 405.385.0721 or [mheaps@OSUgiving.com](mailto:mheaps@OSUgiving.com)

Discover your Orange Passion at: [OSUGIVING.COM](http://OSUGIVING.COM)

Connect with us:     

*uniting donor and university passions and priorities to achieve excellence*